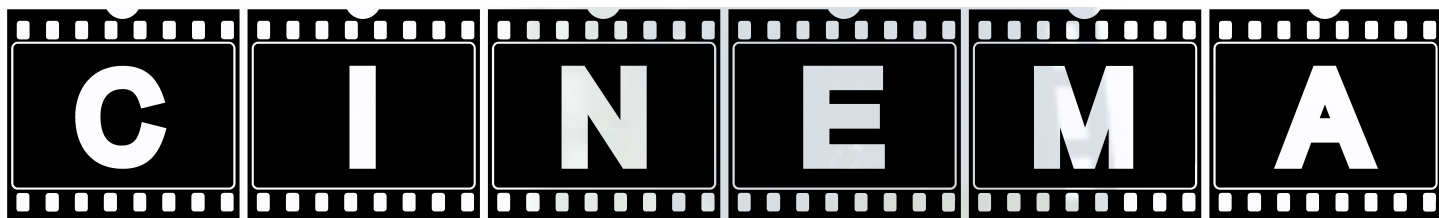


**SUMMER 2015 B-TERM**

**NEAR E 386/586**

# **THE MIDDLE EAST THROUGH**



**SUSAN E. BENSON**

**This course analyzes the function of cinema in shaping communal and individual identities in Middle Eastern cultures. We will examine topics including religious transformation, violence, identity, gender, immigration, and exile through film screenings, discussions, and supplementary readings.**

**T-TH 10:20-1:30**

**5 CREDITS**

**CDH 128**



**NEAR EASTERN LANGUAGES AND CIVILIZATION**

**[susanb9@uw.edu](mailto:susanb9@uw.edu)**